



# DEARBORN ALL WEATHER TRACTOR CAB



Figure 1

---

## INSTALLATION INSTRUCTIONS

*NOTE: The Dearborn All Weather Tractor Cab is available for both Model 8N and 9N Ford Tractors. Except for mounting the Cab Platforms, the assembly procedure provided applies to both models. The procedure for attaching the platforms to the 9N tractor is given on Page 7.*

### MOUNTING CAB PLATFORMS

1. Remove the four bolts (1), Figure 2, from the left hand running board of tractor. Position the left cab platform on the tractor running board and secure with special bolts and lockwashers provided.

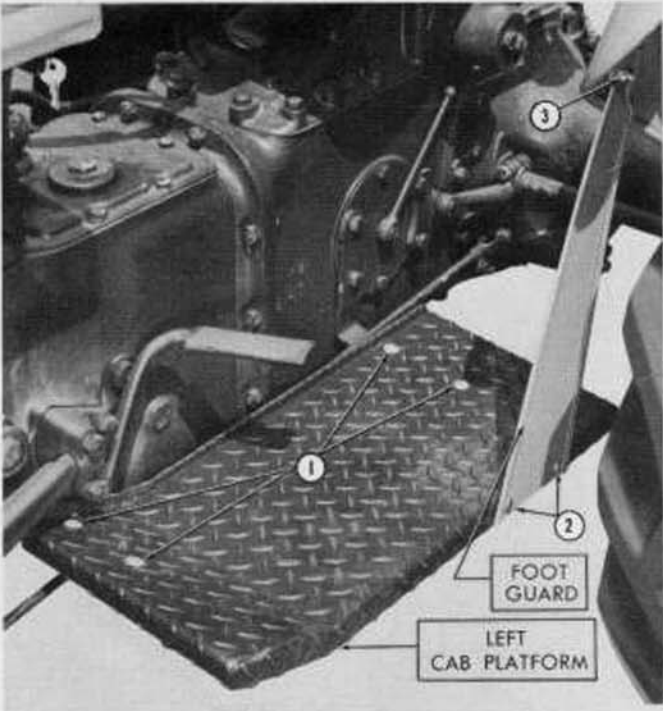


Figure 2

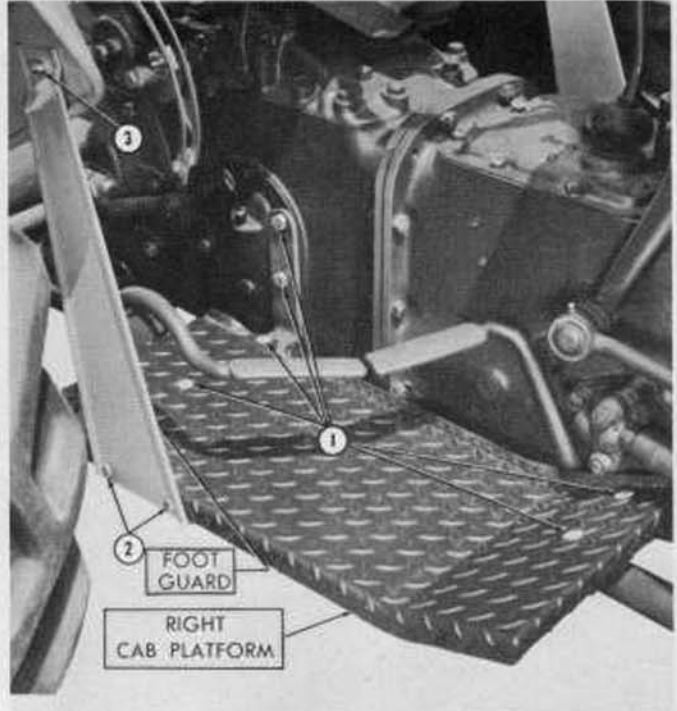


Figure 3

2. Remove the six bolts (1), Figure 3, from the right tractor running board assembly. Position the right cab platform on the tractor running board and secure with special bolts provided. Use the bolts that were removed, to re-attach the rear bracket to the tractor.

3. Attach the foot guards to the platforms with bolts (2) through the holes provided in the platforms. See Figures 2 and 3. Be sure that the bead (edge fold) on the foot guard faces the outside and that the offset on the guard gives clearance to the rolled edge of the tractor fender.



Figure 4

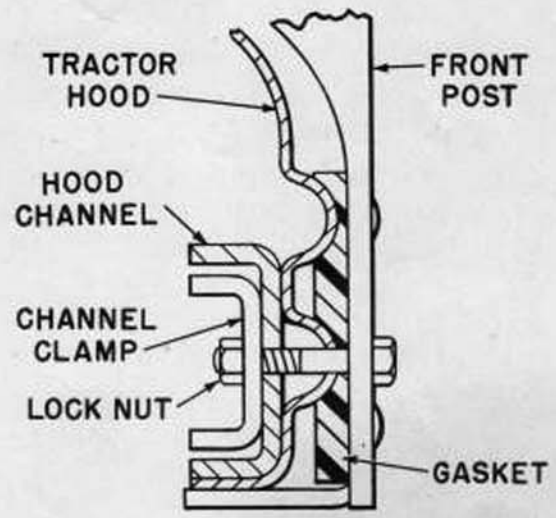


Figure 5

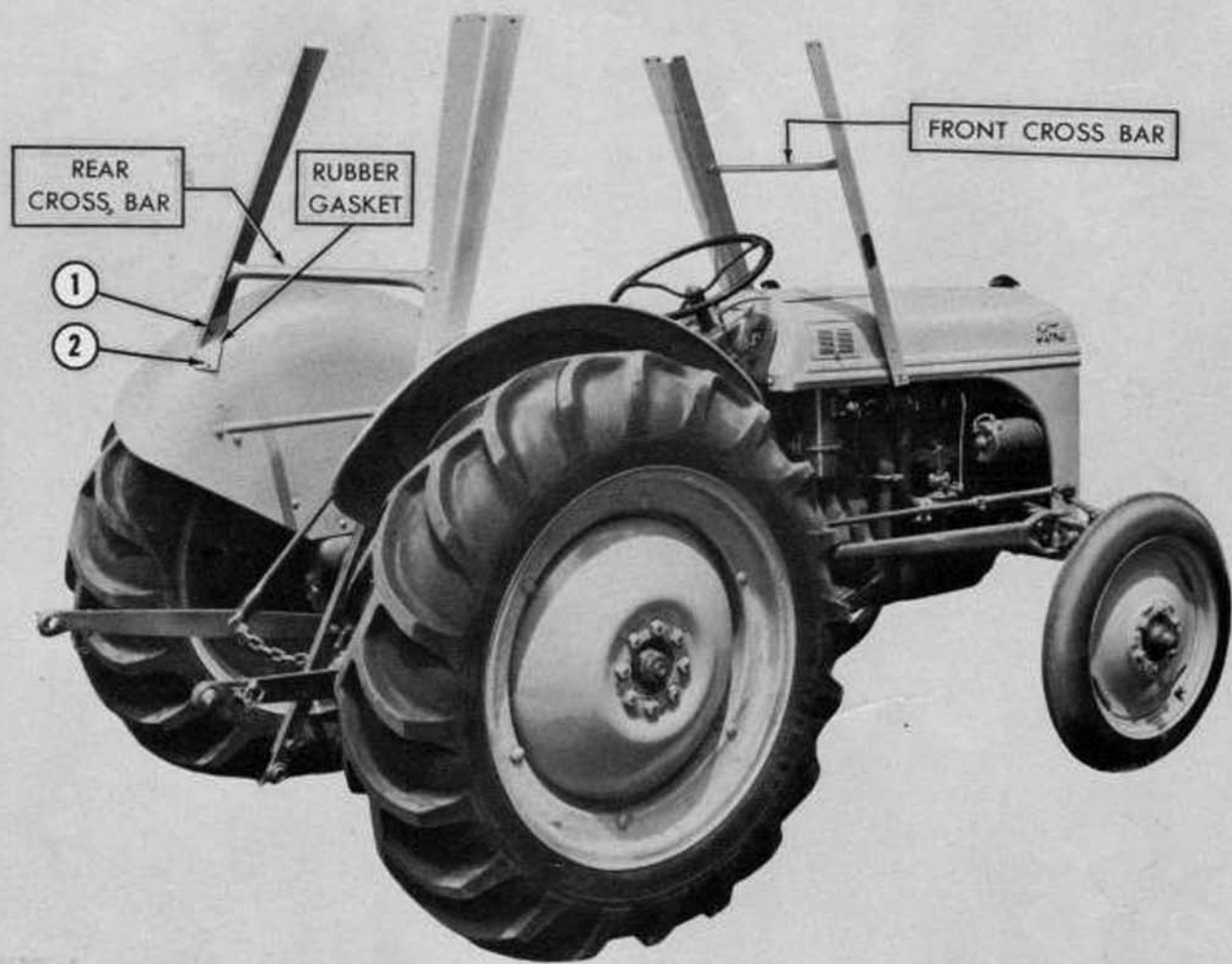


Figure 6

4. Clamp the footguard to the fender and drill a  $\frac{3}{32}$ " hole approximately  $\frac{3}{4}$ " from the top of the foot guard, through the guard and the fender from the guard side. Secure with washer and  $\frac{1}{4}$ " bolt (3) as shown in Figures 2 and 3.

### MOUNTING TRACTOR CAB

1. Remove the hex-head bolt (1) from the rear of each fender. See Figure 6.
2. Position the rubber gaskets to fit between

the fender and the rear post flanges and attach the rear posts to the fenders with the bolts and washers previously removed. See Figure 6. Do not tighten the nuts.

3. Attach the rear cross bar (without tightening nuts) to the inside of the rear posts as shown in Figure 6.
4. Carefully locate and drill a  $\frac{3}{8}$ " hole on both sides of the tractor hood as shown in Figure 4. Mark hole locations with a prick punch before drilling.



**Figure 7**

5. Mount front posts on tractor hood as follows:
  - a. Position heavy rubber gasket between the hood and front posts.
  - b. Place channel clamp inside hood channel (see Figure 5).
  - c. Insert bolt through post, hood, and channel clamp and start nut on bolt. Tighten finger tight.
6. Attach the front cross bar to the inside of the front posts as shown in Figure 6. Be sure that the cross bar offset is toward the driver's side. Do not tighten the nuts.

*NOTE: When the cab has been assembled as shown in Figure 6, all post and crossbar mounting nuts should be loose.*

7. Position the cab top on the posts and insert the center bolt on each post. Leave the nuts loose. Insert the eight remaining bolts and attach the self-locking nuts without tightening.
8. Tighten all bolts and nuts securely and drill a  $\frac{3}{32}$ " hole in each fender through the hole (2) in the flange of each rear post. See Figure 6. Secure the post flanges to the fenders with the bolts provided.





Figure 8

### ATTACHING WINDSHIELD

1. Attach ten (10) windshield fasteners to the cab top and front posts in the holes provided. See Figure 7 for hole locations. The eight fasteners for the posts go on the outside and are secured on the inside with lockwashers and hex nuts; the two fasteners for the cab top go on the inside and are secured on the outside with acorn nuts as shown in Figure 8. The parts are in an envelope in the parts bag.
2. Figure 8 shows the windshield installed. Note that the windshield is fastened to the *inside* of the cab top and on the *outside* of the front posts.

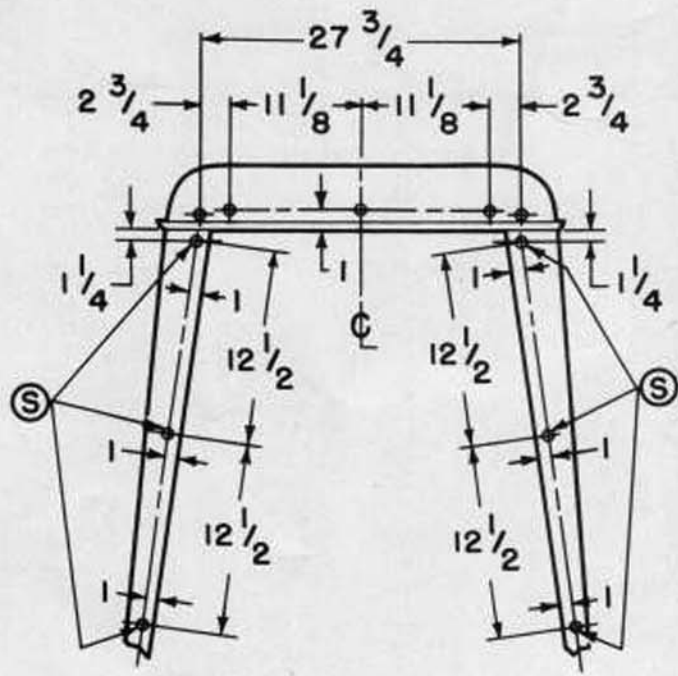
### ATTACHING CURTAINS

1. *Carefully* locate, prick punch, and drill the curtain fastener holes as shown in Figure 9. *Use the drill sizes indicated.*
2. Attach all curtain fasteners of the cab top on the inside and secure with acorn nuts on the outside.
3. Attach the side curtain supports to the cab top with the bolts and self-locking nuts. Do not tighten the nuts until the bottom end

of the straps have been attached to the tractor fenders.

4. Remove the top center fender bolt from each fender and attach the bottom end of the curtain supports to the fenders with the removed bolts.
5. Attach the remaining curtain fastener and use the long fasteners where indicated in Figure 9. Attach two short fasteners to each platform in the holes provided. Use the hex-nuts and lock washers to secure all the fasteners where acorn nuts are not used.
6. Fasten curtains to the cab. (See Figure 10.)
  - a. Attach the rear curtain so that the top of the curtain fastens inside the cab top.
  - b. Attach the quarter panels to overlap the rear curtain. The top fastens inside of the cab top.
  - c. Attach the side (door) curtains. Rear of the curtains overlaps the quarter panels and the front fastens to the inside of the front posts. The top fastens inside of the cab top.
  - d. The bottom is fastened to the front and side fasteners on the platforms.

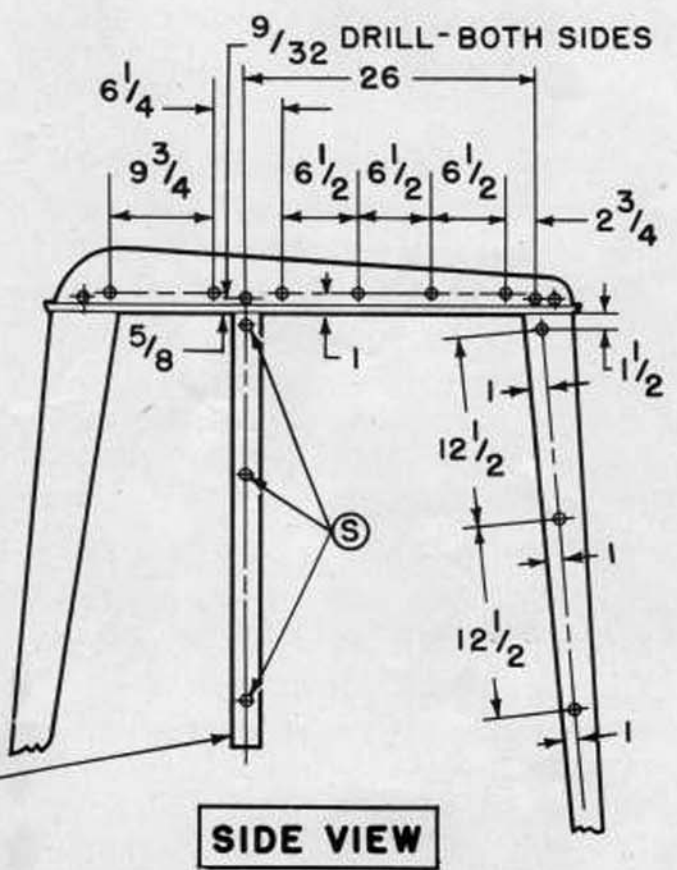
**DIAGRAM FOR DRILLING  
CURTAIN FASTENER HOLES  
FOR THE DEARBORN ALL  
WEATHER TRACTOR CAB**



**REAR VIEW**

USE EXTRA LONG FASTENERS  
WHERE SPECIFIED BY LETTER "S"

NOTE: USE 7/32 DRILL FOR ALL  
FASTENER HOLES



**SIDE CURTAIN  
SUPPORT**

**SIDE VIEW**

Figure 9



Figure 10

### INSTALLING CAB PLATFORMS ON 9N FORD TRACTOR

**CAUTION:** Do not tighten bolts underneath the tractor until after all parts are lined up and assembled in place.

1. Install the running board supports (angle brackets) in position, using two (2)  $\frac{7}{16}$ "-14 x  $1\frac{3}{8}$ " hex head bolts in the front bracket and two (2)  $\frac{7}{16}$ "-20 x  $1\frac{3}{4}$ " hex head bolts in the rear bracket. Attach the nuts previously removed from the tractor.
2. Place the running boards in position on the support brackets and insert the square shouldered carriage bolts in the  $\frac{3}{8}$ " round holes through the running boards and hanger brackets, then tap with a hammer to drive the square shoulder into the sheet metal. Install the  $\frac{5}{16}$ " lockwashers and nuts and draw up flush.
3. Start (do not tighten) the two (2)  $\frac{5}{16}$ "-18 x  $\frac{5}{8}$ " hex bolts through the elongated holes into the step brackets over the exhaust pipe; using one (1) flat steel washer under each head.
4. Tighten the four (4) bolts underneath the tractor.
5. Draw down the two (2) bolts in the step over the exhaust pipe.
6. Attach the two (2) rear wheel guards to the running boards (with the top end between the wheel and fender), using  $\frac{1}{4}$ "-20 x  $\frac{1}{2}$ " round head bolts, lockwashers and nuts and draw up tight to the running boards.
7. Draw the top end of the rear wheel guard against the underside of the fender and hold same in position with a "C" clamp, then drill one  $\frac{3}{32}$ " hole through the fender and guard about  $\frac{3}{4}$ " below the top end of the guard. Insert a  $\frac{1}{4}$ " round head bolt through both the fender and guard, place the flat steel washer in position, attach the nut and draw up tight.

**NOTE:** Check the nuts and bolts occasionally and keep them tight.



# SEE YOUR LOCAL FORD TRACTOR DEALER

*Here are some of the implements in the Dearborn Farm Equipment Line:*

DOUBLE-BOTTOM PLOWS	FIELD CULTIVATORS	HEAVY DUTY LOADERS
DISC PLOWS	FOUR ROW WEEDERS	LIGHT LOADERS
TWO-WAY PLOWS	ROTARY HOES	HYDRAULIC SCOOPS
MIDDLEBUSTERS	LISTER PLANTERS	TERRACING BLADES
SINGLE DISC HARROWS	BUSTER PLANTERS	SCRAPERS
TANDEM DISC HARROWS	MOWERS	4-WHEEL WAGONS
SPRING TOOTH HARROWS	SWEEP RAKES	POST HOLE DIGGERS
SOIL PULVERIZERS	DEARBORN-WOOD BROS.	DISC RIDGERS
SUBSOILERS	CORN PICKERS	SNOW PLOWS
ROW-CROP CULTIVATORS	DEARBORN-WOOD BROS.	BLADE SCRAPERS
SPRING SHANK CULTIVATORS	COMBINES	

Your dealer will be glad to come to your farm and, without obligation, demonstrate any equipment that interests you. Other equipment is constantly being developed and added to the Dearborn line.

*Ask for a Demonstration*

## DEARBORN MOTORS CORPORATION

### EQUIPMENT WARRANTY

DEARBORN MOTORS CORPORATION warrants all parts (other than tires) of equipment bearing the trade mark "Dearborn Equipment" to the original purchaser thereof at retail, for a period of six (6) months from the date of delivery thereof to the original purchaser at retail, to be free from defects in workmanship and material under normal use and service. The obligation of Dearborn Motors Corporation under this warranty shall be limited to shipment, without charge to the original purchaser at retail, of the part or parts acknowledged by Dearborn Motors Corporation to be defective in workmanship or material. This warranty is in lieu of all other warranties, expressed or implied, and of all obligations or liabilities on the part of Dearborn Motors Corporation, and it neither assumes nor authorizes any person to assume for it, any other obligation or liability in connection with workmanship or material of equipment bearing the trade mark "Dearborn Equipment" or any part thereof. This warranty shall not apply to any Dearborn Equipment, or any part thereof, which has been damaged in any accident, or by fire, flood, or Act of God, or abused or misused, or which has been altered elsewhere than at the place of manufacture, or in which the original purchaser thereof at retail, has used or allowed to be used, parts not made or supplied by Dearborn Motors Corporation. Dearborn Motors Corporation reserves the right at any time to make changes in the design, materials and/or specifications of equipment bearing the trade mark "Dearborn Equipment" and/or accessories therefor, without thereby becoming liable to make similar changes in equipment bearing the trade mark "Dearborn Equipment" and/or accessories therefor, previously manufactured.

## DEARBORN MOTORS CORPORATION

DETROIT 3, MICHIGAN